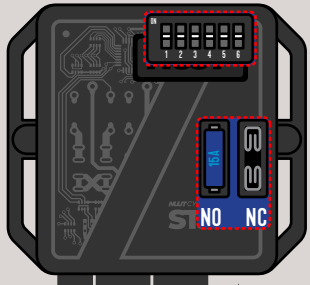


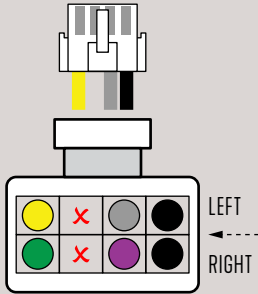
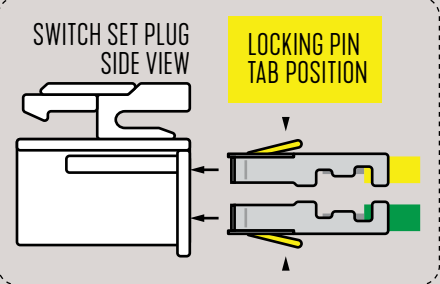
**ONBOARD DIP SWITCHES**  
HANDLEBAR SETTINGS



FOR SWX.22M2 (2 BUTTON LEFT, 2 BUTTON RIGHT)  
ALL MOMENTARY (SELF-RETURN) PUSH BUTTONS



**ONBOARD FUSE SETTING**  
INSTALL 15A FUSE  
ON LEFT SIDE (NO)



SWITCH SET

RIGHT

LEFT



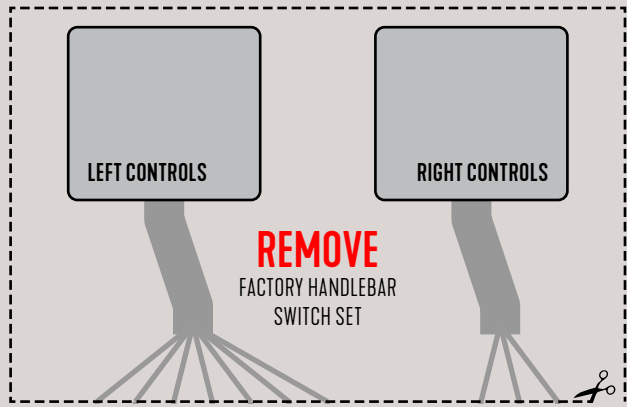
LEFT

SWX.22M2  
SWITCH SET



RIGHT

KEEP/RETAIN  
FRONT BRAKE SWITCH



LEFT CONTROLS

RIGHT CONTROLS

**REMOVE**  
FACTORY HANDLEBAR  
SWITCH SET

**CONNECT TO**  
EXISTING WIRES FROM FACTORY HARNESS

FACTORY  
KEY SWITCH



POWER KEY ON

FACTORY HARNESS  
LEFT CONTROLS

FACTORY HARNESS  
RIGHT CONTROLS