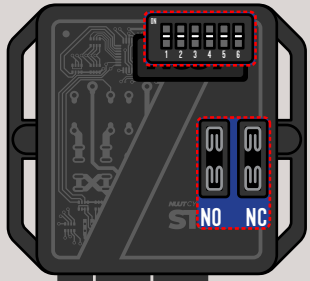


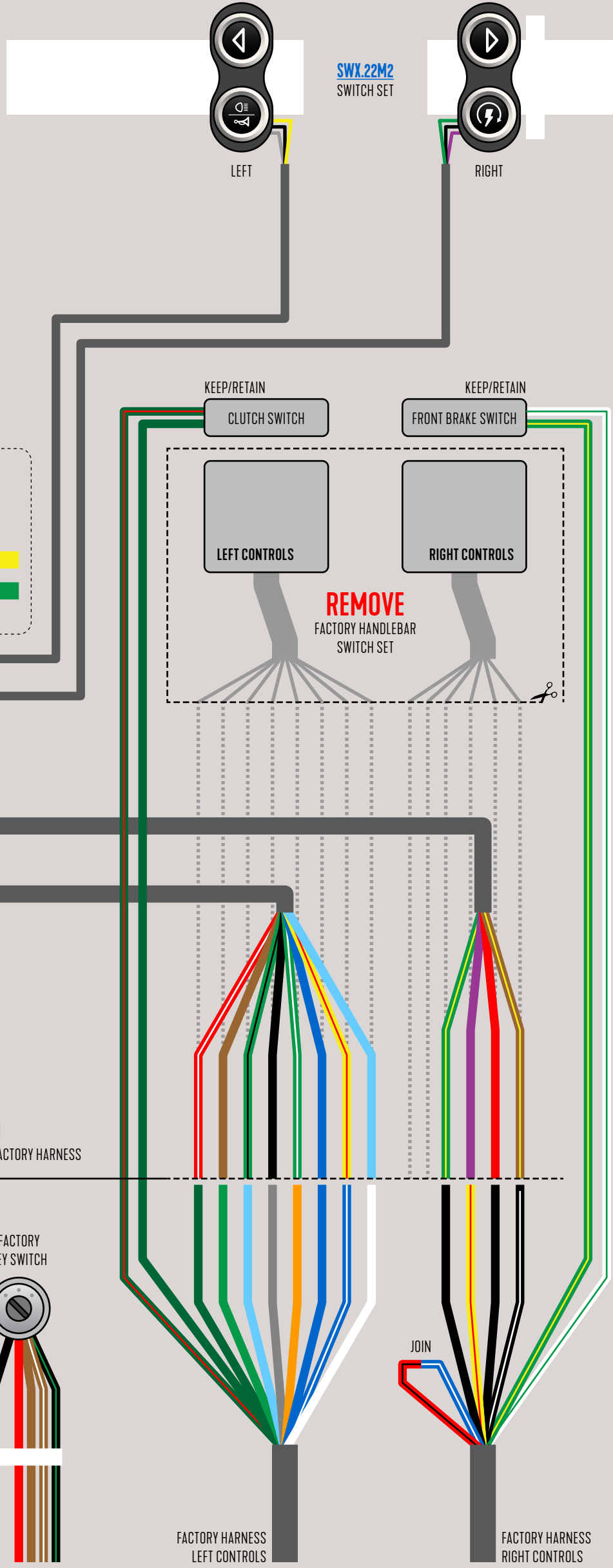
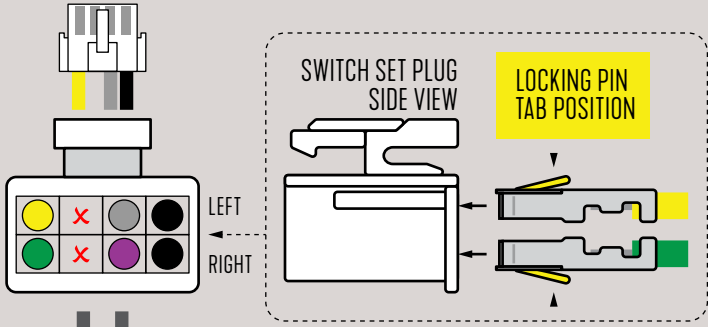
ONBOARD DIP SWITCHES
HANDLEBAR SETTINGS



FOR SWX.22M2 (2 BUTTON LEFT, 2 BUTTON RIGHT)
ALL MOMENTARY (SELF-RETURN) PUSH BUTTONS



ONBOARD FUSE SETTING
INSTALL 15A FUSE
ON LEFT SIDE (NO)



CONNECT TO
EXISTING WIRES FROM FACTORY HARNESS

FACTORY
KEY SWITCH



POWER KEY ON

FACTORY HARNESS
LEFT CONTROLS

FACTORY HARNESS
RIGHT CONTROLS