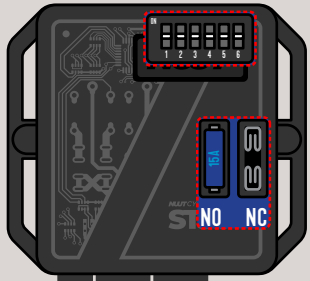


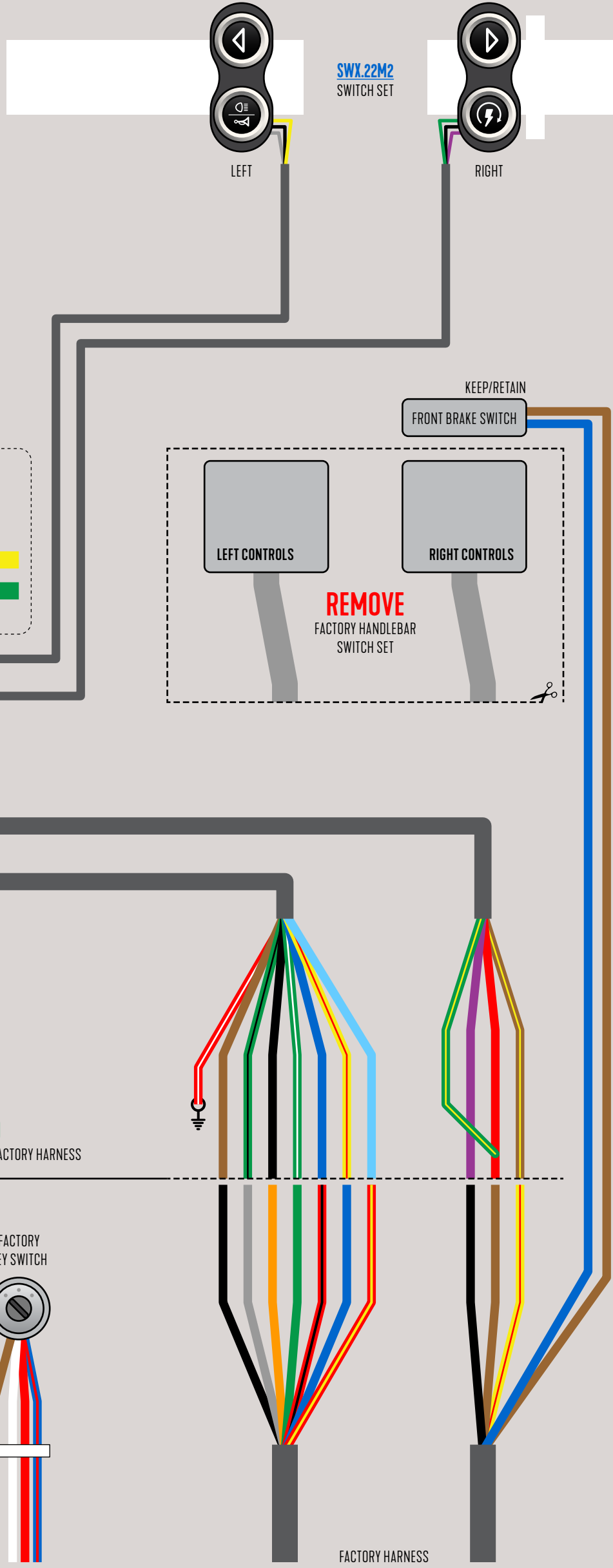
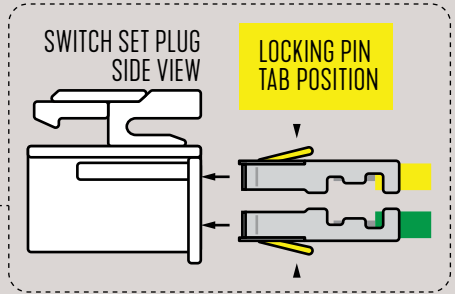
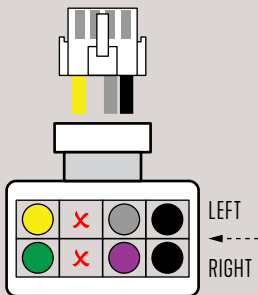
### ONBOARD DIP SWITCHES HANDLEBAR SETTINGS



FOR SWX.22M2 (2 BUTTON LEFT, 2 BUTTON RIGHT)  
ALL MOMENTARY (SELF-RETURN) PUSH BUTTONS



**ONBOARD FUSE SETTING**  
INSTALL 15A FUSE  
ON LEFT SIDE (NO)



**CONNECT TO**  
EXISTING WIRES FROM FACTORY HARNESS

FACTORY  
KEY SWITCH

POWER KEY ON

FACTORY HARNESS