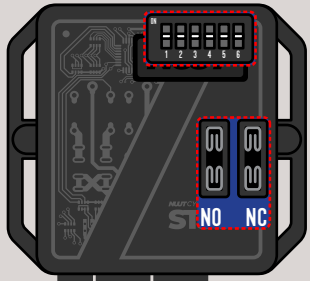


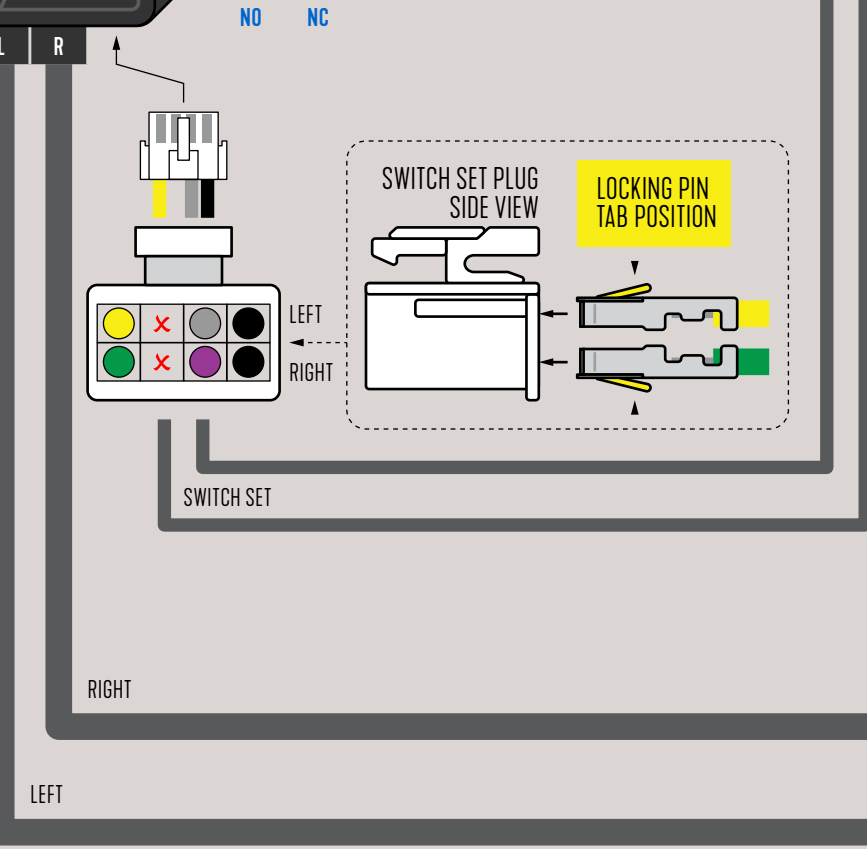
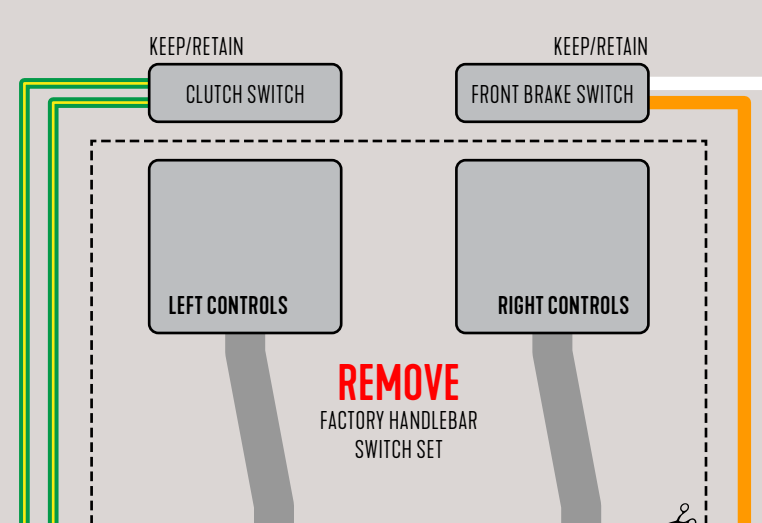
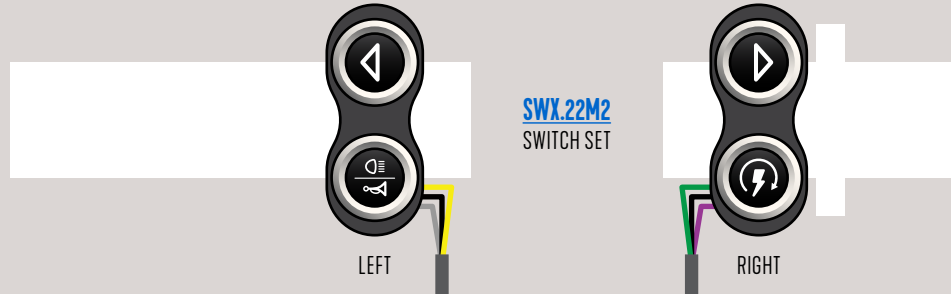
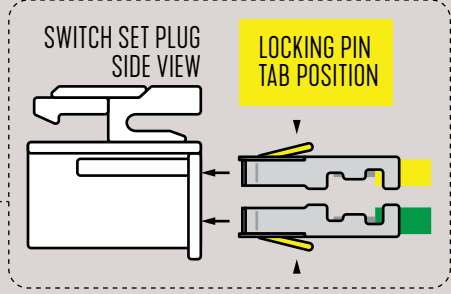
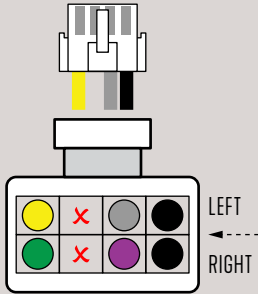
ONBOARD DIP SWITCHES HANDLEBAR SETTINGS



FOR SWX.22M2 (2 BUTTON LEFT, 2 BUTTON RIGHT)
ALL MOMENTARY (SELF-RETURN) PUSH BUTTONS



ONBOARD FUSE SETTING
INSTALL 15A FUSE
ON LEFT SIDE (NO)

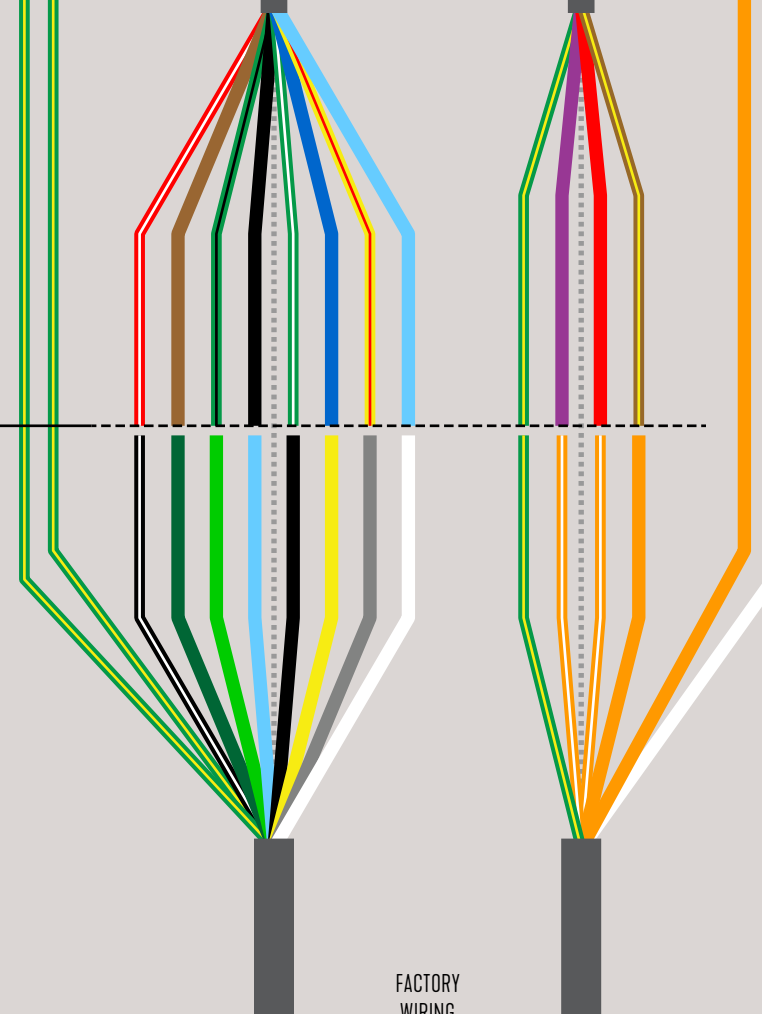


CONNECT TO EXISTING WIRES FROM FACTORY HARNESS

FACTORY
KEY SWITCH



POWER KEY ON



FACTORY
WIRING