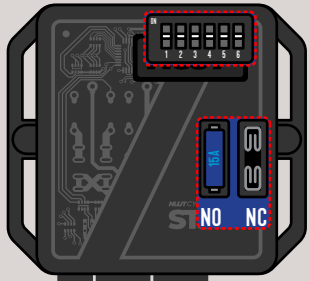


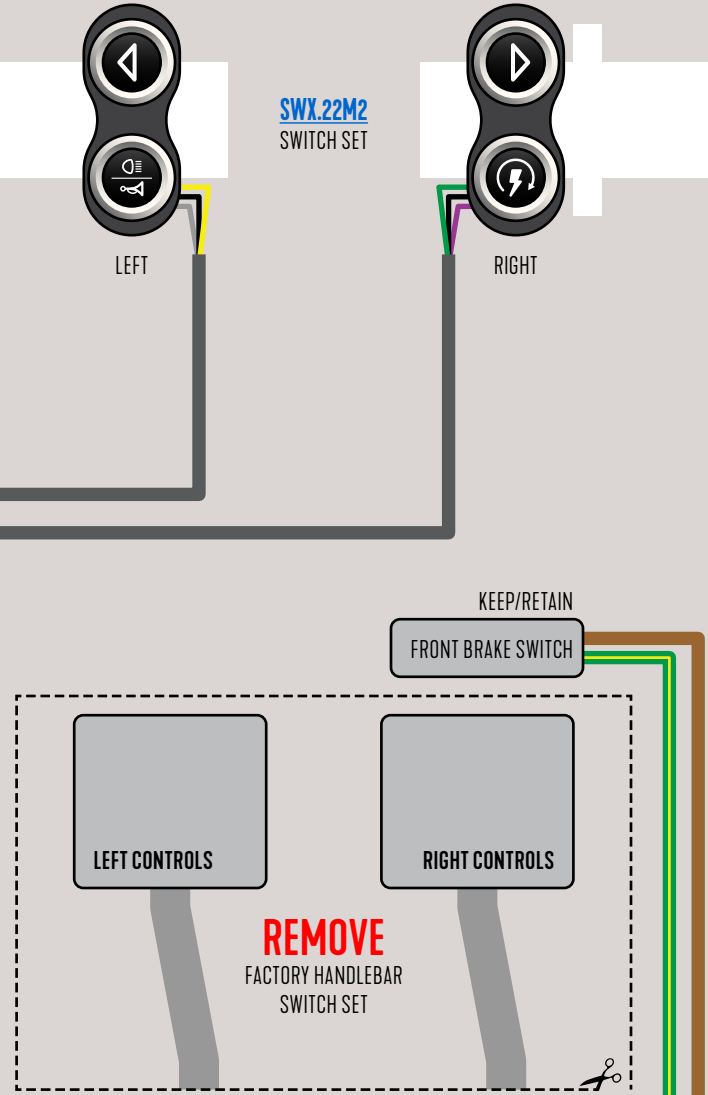
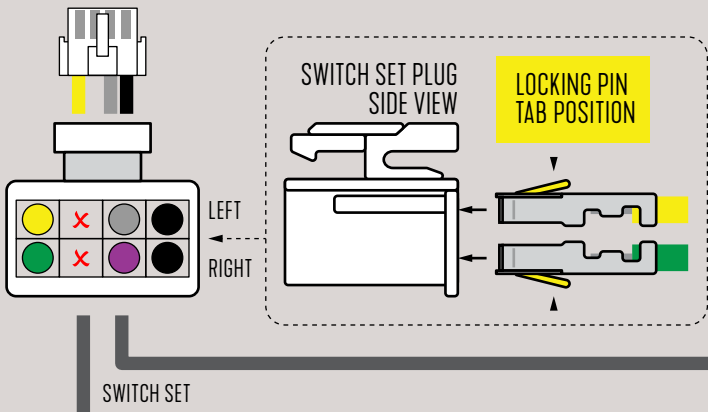
### ONBOARD DIP SWITCHES HANDLEBAR SETTINGS



FOR SWX.22M2 (2 BUTTON LEFT, 2 BUTTON RIGHT)  
ALL MOMENTARY (SELF-RETURN) PUSH BUTTONS



ONBOARD FUSE SETTING  
INSTALL 15A FUSE  
ON LEFT SIDE (NO)



RIGHT  
LEFT

### CONNECT TO EXISTING WIRES FROM FACTORY HARNESS

POWER KEY ON

FACTORY  
KEY SWITCH



FACTORY HANDLEBAR  
CONTROL WIRES